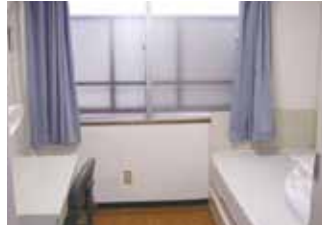


14

## Dormy Toritsu Kasei

A year and a half agreement available to School of International Liberal Studies students. Access to 2 train stations.

Waseda Toyama Nishi-Waseda



Public area equipment



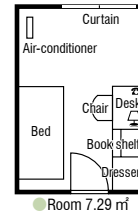
### Overview

Location / 2-22-18 Nakamura Minami, Nerima-ku, Tokyo 176-0025  
Transportation / 10-min. walk from Toritsu-Kasei Station on Seibu Shinjuku Line  
10-min. walk from Nakamura Station on Seibu Ikebukuro Line  
Building / 4-story fire resistant reinforced concrete  
Capacity / 102 students

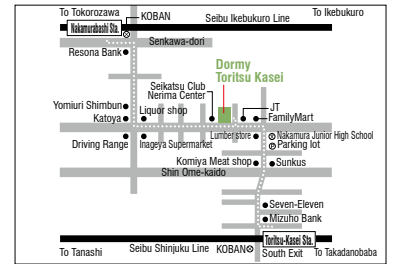
### Access



Seibu Shinjuku Line: 10 min.



Room 7.29 m<sup>2</sup>



15

## Dormy logi

Each room comes with a private bathroom.  
Large Japanese-style bath, sauna and Jacuzzi are also available.

Waseda Toyama Nishi-Waseda



Public area equipment



Private room equipment



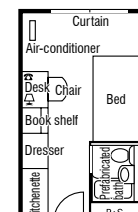
### Overview

Location / 1-1-23 Shimoshakujji, Nerima-ku, Tokyo 177-0042  
Transportation / 12-min. walk from logi Station on Seibu Shinjuku Line  
Building / 3-story steel construction  
Capacity / 120 students

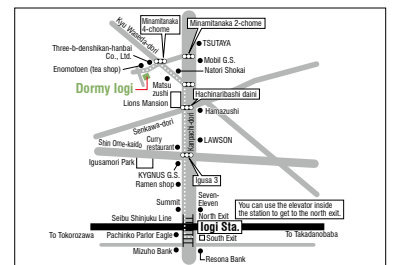
### Access



Seibu Shinjuku Line: 16 min.



Room 16.20 m<sup>2</sup>



16

## Dormy Kamishakujji

The largest dormitory with the latest facilities!  
About 11 minutes to Takadanobaba (by Train).

Waseda Toyama Nishi-Waseda



Public area equipment



Private room equipment



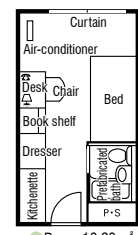
### Overview

Location / 1-9-46 Sekimachinami, Nerima-ku, Tokyo 177-0053  
Transportation / 6-min. walk from Kamishakujji Station on Seibu Shinjuku Line  
Building / 8-story fireproof heavy gauge steel structure  
Capacity / 212 students

### Access



Seibu Shinjuku Line: 11 min. by express



Room 16.20 m<sup>2</sup>

